

STUDIES ON FREQUENCY DISTRIBUTION OF YIELD AND YIELD RELATED TRAITS IN F₂M₂ GENERATION OF SESAME (*Sesamum indicum* L.)

RAJESH KUMAR KAR *, TAPASH KUMAR MISHRA AND BANSHIDHAR PRADHAN

Department of Plant Breeding and Genetics, College of Agriculture,
OUAT, Bhubaneswar -751003 Odisha, INDIA
e-mail : rajeshkar023@gmail.com

KEYWORDS

Ethyl methanesulfonate
Frequency distribution
Kurtosis
Recurrent mutagenesis

Received on :
08.06.2020

Accepted on :
21.07.2020

*Corresponding
author

ABSTRACT

The present investigation was undertaken to assess the combined effects of hybridization and mutagenesis on distribution parameters of yield and its related traits. The materials were grown in Randomized Block Design with three replications at Economic Botany-II Section of the Department of Plant Breeding and Genetics, College of Agriculture, OUAT, Bhubaneswar and observations were taken on polygenic traits. All populations appeared as fairly symmetrical, except ¹F₂¹M₂ (0.638) and ³F₂²M₂ (0.829) showing moderately positive skewness for plant height. Frequency curves showed restricted distribution in mutants for primary branches per plant than respective controls. All the populations showed moderately positive skewness except, ³F₂ and ³F₂²M₂ with highly positive skewness (1.296) and nearly symmetrical distribution (0.106) for number of capsules per plant. All the populations showed moderate to high positive skewness for seed yield per plant. Populations ²F₂, ²F₂¹M₂, ³F₂ and ³F₂²M₂ showed leptokurtic distribution with kurtosis estimates of 3.971, 5.088, 4.678 and 5.721 respectively for this character. In general, negative changes were observed for plant height and positive changes for number of capsules per plant and seed yield per plant in mutants compared to respective controls. These changes must have come through induced mutagenesis indicating higher effectiveness of mutagenesis on hybrids for enlarging variations. This variability might be further utilized in the potential breeding programme for yield improvement.

INTRODUCTION

Sesame (*Sesamum indicum* L.) belongs to the order tubiflorae, family Pedaliaceae, genus Sesamum, is an ancient oil yielding crop. Sesame is cultivated in an area of 13.9 lakh hectares in India with an annual production of 41.8 lakh tonnes and productivity of 291 kg/ha (Anonymous, 2019). Uttar Pradesh, Gujarat, Madhya Pradesh, Tamil Nadu, Odisha, Andhra Pradesh, West Bengal and Rajasthan are the major sesame growing states in India. In Odisha, sesame is cultivated in 0.23 lakh hectares with a production of 0.55 lakh tonnes and productivity of 237 kg/ha (MOA, 2015). The low productivity of sesame in India is due to low yield potential of the varieties coupled with poor crop management (Monpara and Gohil, 2018). Genetic variation in a crop is a pre-requisite to make the selection effective (Holme *et al.*, 2019). Hybridization followed by selection in segregating generations is the main approach in breeding in self-pollinated crop like sesame, but tight linkage of polygenes controlling the characters could be an obstruction to release the useful variability. To overcome this difficulty some workers have examined the usefulness of combining hybridization and mutagenesis for generating variability for quantitative traits (Gregory, 1961). Chemical mutagen treatment of hybrids is one of the methods to increase mutation frequency. Studies on the efficacy of chemical mutagen treatment like Ethyl methanesulfonate (EMS) in hybrids for enlarging useful variability in sesame are extremely limited. Chakravarti *et al.* (2013) and Singh *et al.* (2018)

reported enhanced variability in EMS treated mutants compared to control during the evaluations. It is hypothesized that mutagenic treatment might bring changes in the distribution pattern in both positive as well as in negative directions (Mishra *et al.*, 2008); these positive changes could be further utilized in the selection of superior plants. The objective of present investigation intended to analyze additional induced variability if any, created by recurrent mutagenesis through distribution patterns which could be utilized further in sesame improvement.

MATERIALS AND METHODS

The basic material of the present investigation consisted of three adapted sesame varieties of Odisha viz., Nirmala, Prachi and Amrit. These varieties were crossed and three inter-varietal crosses (F₁s) were created, excluding the reciprocal crosses. Based on the previously reported research ethyl methanesulfonate (EMS) with dose of 0.5 per cent for three hours/cycle was selected for mutagenic treatment of hybrids (Begum and Dasgupta, 2010, Begum and Dasgupta, 2015 and Kumari *et al.*, 2016). In F₂M₂ generation materials comprising of six F₂M₂s mutant populations (three non recurrent and three recurrent), three F₂s populations and three parents. These materials were grown in a Randomized Block Design (RBD) with three replications during Kharif, 2017 at Economic Botany-II Section of the Department of Plant Breeding and Genetics, College of Agriculture, OUAT

Bhubaneswar. Designation of various treatments and controls (F_2 s) is presented in Table 1. In F_2M_2 generation experimental plot consisted of eight rows of three meters each, with 30 cm x 10 cm spacing. In order to ensure stand, two to three seeds were dibbled per hill and later thinned one seedling per hill. Normal cultural practices, including fertilizer application @ 30 kg N, 60 kg P_2O_5 and 40 kg K_2O and plant protection measures were followed as needed. Observations were taken on four quantitative traits *viz.*, plant height, number of primary branches per plant, number of capsules per plant and single plant yield. Single plant observation was taken for all the studied characters using a sample of 30 randomly chosen competitive plants per plot. In F_2M_2 generation, pattern of variations among mutants was examined through frequency curves using Microsoft Excel 2007 (Microsoft Corp., Redmond, WA, USA). Possible deviation of these populations from normal distribution was examined through skewness and kurtosis estimates following method as suggested by Gupta (1981).

RESULTS AND DISCUSSION

The purpose of present investigation intended to analyze additional induced variability if any, created by recurrent mutagenesis of hybrids through analysis of distribution patterns which could be utilized further in sesame improvement. The pattern of variations of yield and yield related traits in F_2M_2 generation was analyzed by frequency curves, skewness and kurtosis. Skewness describes the degree of deviation of a

distribution from symmetry and kurtosis characterizes the peakedness or flatness of a distribution. In mutagen treated populations skewness and kurtosis indicates the nature of variation. Symmetrical distribution assures equal frequency of minus and plus mutations. Any deviation from normality is indicated by tests of skewness and kurtosis. Frequency curves of the F_2M_2 populations of four characters are presented in Figure1 to Figure 12, also the estimates of skewness and kurtosis are presented in Table 2.

All the F_2 s and F_2M_2 s populations were found to be fairly symmetrical except populations $^1F_2^1M_2$ and $^3F_2^2M_2$ with moderately positive skewness for plant height in sesame, which is also apparent from the frequency curves (Figure1 to Figure 3). Among the mutants and crosses, three populations (2F_2 , $^2F_2^1M_2$ and $^3F_2^1M_2$) were platykurtic, one population ($^3F_2^2M_2$) as leptokurtic and rest of the populations found as mesokurtic in nature for plant height in sesame, however, in frequency curve population $^1F_2^2M_2$ appeared as more peaked than respective control (1F_2) and corresponding one cycle EMS treated population $^1F_2^1M_2$ for plant height in sesame. All the mutant and cross populations were found to be fairly symmetrical, except populations 1F_2 and $^2F_2^2M_2$ (moderately positive skewed) for number of primary branches per plant. All the $F_2^2M_2$ s populations appeared as leptokurtic, population $F_2^1M_2$ s as platykurtic and population F_2 s with mesokurtic distribution of number of primary branches per plant. Frequency curves showed more or less restricted distribution in mutants for primary branches per plant than respective

Table1: Treatment symbol and description of various treatments and controls in F_2M_2 generation of sesame

Sl. No	Treatment symbol	Description
1.	V_1	Variety 1 (Nirmala)
2.	V_2	Variety 2 (Prachi)
3.	V_3	Variety 3 (Amrit)
4.	1F_2	F_2 generation of cross 1 (Nirmala x Prachi)
5.	2F_2	F_2 generation of cross 2 (Nirmala x Amrit)
6.	3F_2	F_2 generation of cross 3 (Prachi x Amrit)
7.	$^1F_2^1M_2$	F_2M_2 generation following one cycle EMS treatment of F_1 seeds of cross 1
8.	$^2F_2^1M_2$	F_2M_2 generation following one cycle EMS treatment of F_1 seeds of cross 2
9.	$^3F_2^1M_2$	F_2M_2 generation following one cycle EMS treatment of F_1 seeds of cross 3
10.	$^1F_2^2M_2$	F_2M_2 generation following EMS treatment (two cycles) of $F_2^1M_2$ seeds* of cross 1
11.	$^2F_2^2M_2$	F_2M_2 generation following EMS treatment (two cycles) of $F_2^1M_2$ seeds* of cross 2
12.	$^3F_2^2M_2$	F_2M_2 generation following EMS treatment (two cycles) of $F_2^1M_2$ seeds* of cross 3

(* Mark indicates seeds of $F_1^1M_1$ plants. The superscript of F_2 in treatment symbol is not a part of the filial generation it represents the cross number, similarly superscript of M_2 indicates the mutagen treated cycles)

Table 2: Skewness (Sk) and Kurtosis (kts) estimates for four characters in F_2M_2 generation of sesame

Treatments	Plant height		Number of primary branches per plant		Number of capsules per plant		Seed yield per plant	
	Sk	Kts	Sk	Kts	Sk	Kts	Sk	Kts
V_1	0.18	2.607	-0.182	1.721	0.469	3.084	0.561	2.718
V_2	0.199	3.272	-0.17	1.897	0.128	2.154	0.463	2.558
V_3	0.369	2.347	0.089	2.27	0.492	2.71	0.829	2.954
1F_2	0.309	2.83	0.646	3.309	0.538	3.763	0.722	3.662
$^1F_2^1M_2$	0.638	2.996	-0.176	1.818	0.638	2.484	0.949	3.284
$^1F_2^2M_2$	0.169	3.171	0.372	3.878	0.648	2.224	0.908	3.191
2F_2	0.006	2.301	0.691	3.383	0.831	3.308	1.086	3.971
$^2F_2^1M_2$	0.255	2.141	0.482	1.856	0.638	2.743	1.342	5.088
$^2F_2^2M_2$	0.015	2.65	0.683	4.917	0.708	2.294	0.843	3.397
3F_2	0.027	2.655	0.208	2.893	1.296	5.179	1.147	4.678
$^3F_2^1M_2$	-0.052	2.053	0.218	2.029	0.657	2.226	0.726	2.938
$^3F_2^2M_2$	0.829	5.405	0.425	4.008	0.106	2.028	1.261	5.721

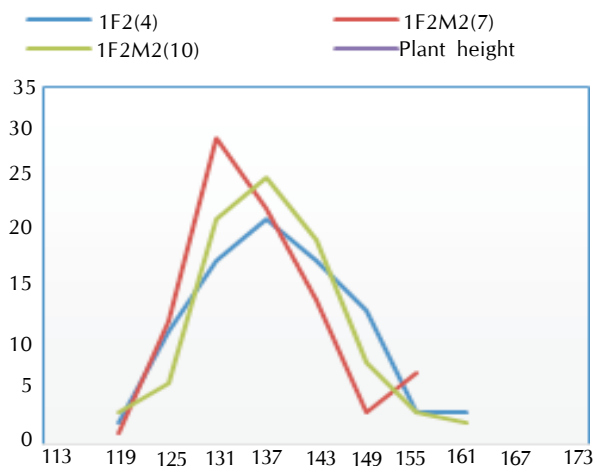


Figure 1 : Frequency curves of plant height in F_2M_2 of Nirmala x Prachi

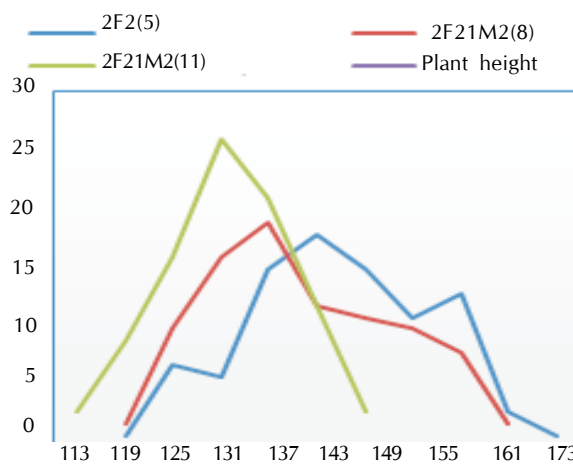


Figure 2 : Frequency curves of plant height in F_2M_2 of Nirmala x Amrit

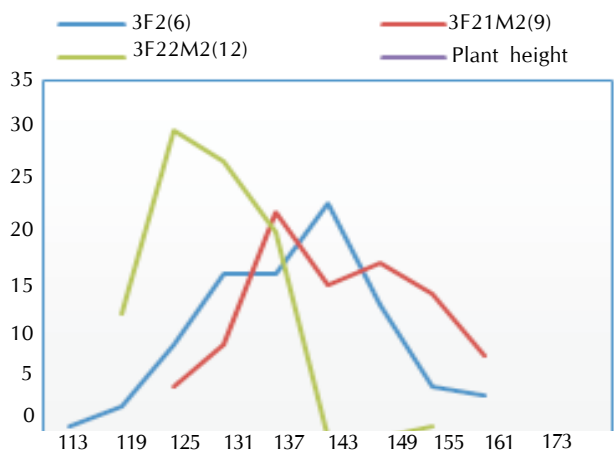


Figure 3: Frequency curves of plant height in F_2M_2 of Prachi x Amrit

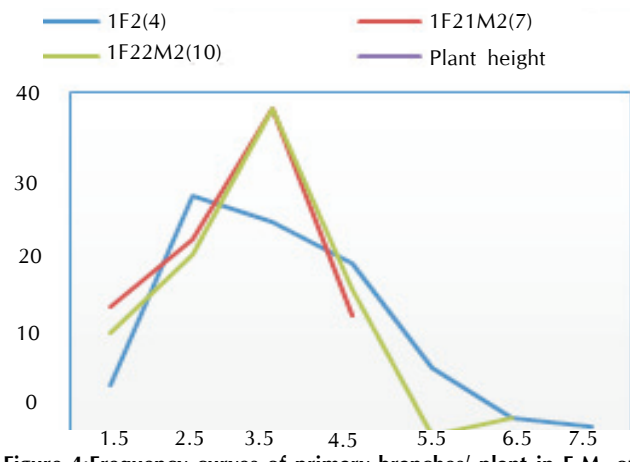


Figure 4: Frequency curves of primary branches/ plant in F_2M_2 of Nirmala x Prachi

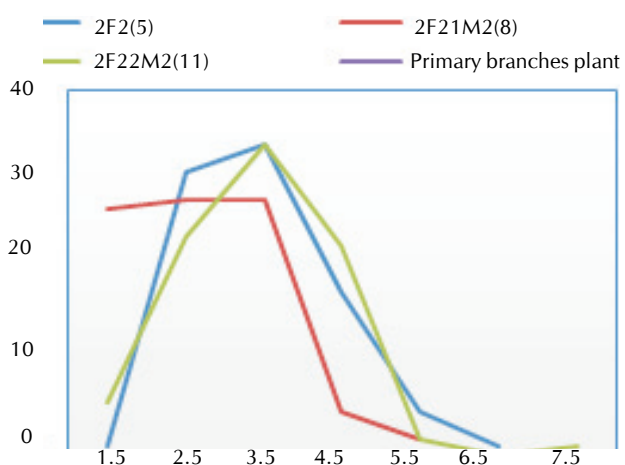


Figure 5: Frequency curves of primary branches/plant in F_2M_2 of Nirmala x Amrit

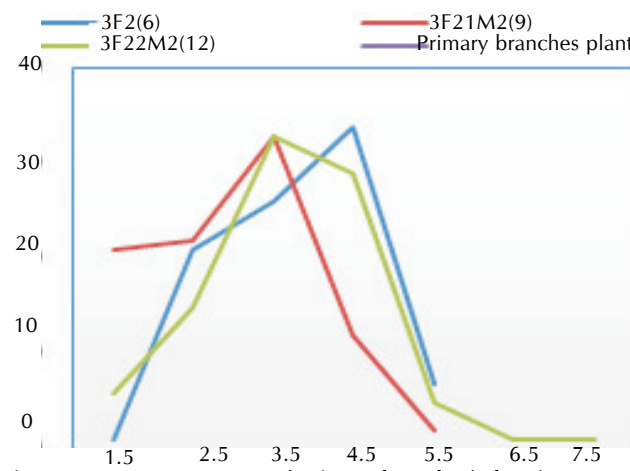


Figure 6: Frequency curves of primary branches/ plant in F_2M_2 of Prachi x Amrit

controls in sesame (Figure 4 to Figure 6).

All the crosses and mutant populations showed moderately positive skewness, except population 3F_2 (with highly positive skewness) and population $^3F_2^2M_2$ (symmetrical distribution)

for number of capsules per plant, also all the mutants showed platykurtic distribution. In the frequency curve one and two cycles EMS treated populations showed more spread and flatter distributions than respective controls (Figure 7 to Figure 9). In

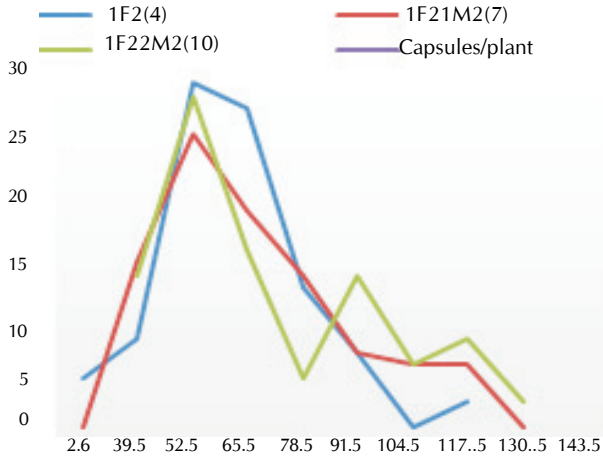


Figure 7: Frequency curves of capsules / plant in F_2M_2 of Nirmala x Prachi

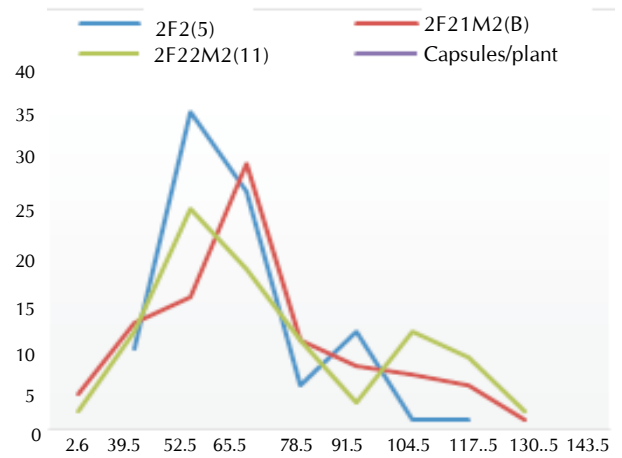


Figure 8: Frequency curves of capsules / plant in F_2M_2 of Nirmala x Amrit

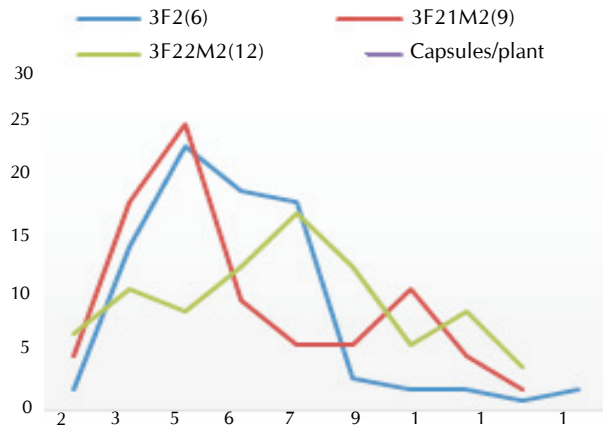


Figure 9: Frequency curves of capsules / plant in F_2M_2 of Prachi x Amrit

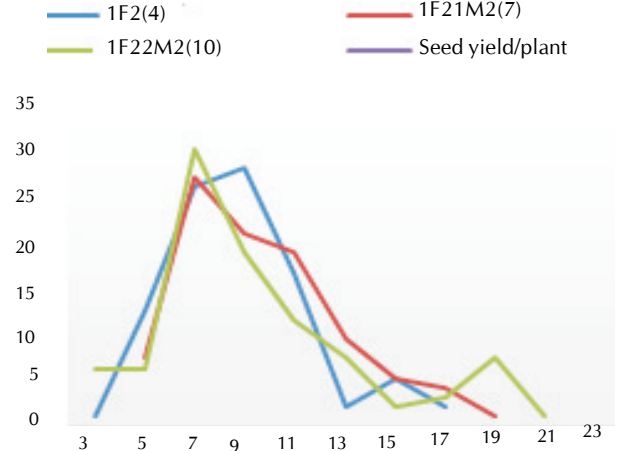


Figure 10: Frequency curves of seed yield / plant in F_2M_2 of Nirmala x Prachi

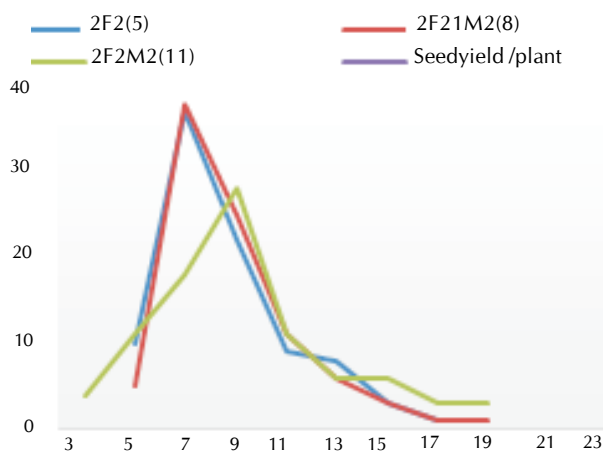


Figure 11: Frequency curves of seed yield/plant in F_2M_2 of Nirmala x Amrit

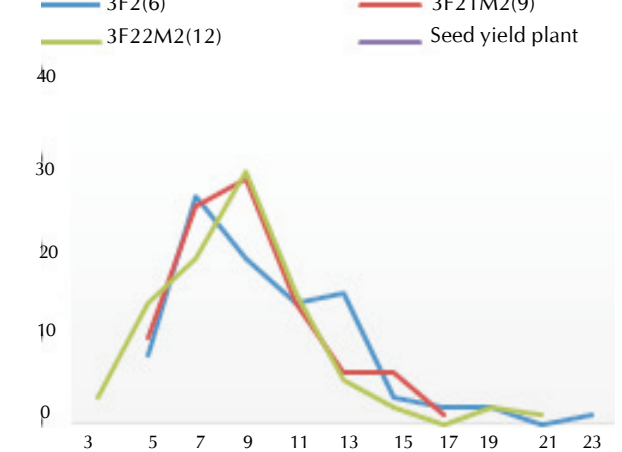


Figure 12: Frequency curves of seed yield/plant in F_2M_2 of Prachi x Amrit

general, two cycles EMS treated populations showed more spread than respective one cycle EMS treated populations for number of capsules per plant in sesame. All the crosses and mutant populations showed moderately positive skewness to

highly positive skewness estimates for seed yield per plant. Populations 2F_2 , $^2F_2^1M_2$, 3F_2 and $^3F_2^2M_2$ showed leptokurtic distribution. Positive skewness and leptokurtic distributions for crosses and mutant populations are also manifest from the

frequency curves for seed yield per plant (Figure 10 to Figure 12). Sumathi and Muralidharan (2010) reported positive skewness in different F_2 populations for number of primary branches, number of capsules per plant and seed yield per plant, also they noticed both leptokurtic and platykurtic distribution of the studied characters in different F_2 populations of sesame.

All the F_2M_2 s populations showed difference in terms of frequency distribution, skewness and kurtosis compared to respective control populations, however the magnitude and frequency of such variants might be more in one or the other direction in some cases or be equal in both directions. Populations having a higher intensity of expression of a trait showed negative skewness for that trait and populations having low values for the traits showed positive skewness. Moreover, populations having intermediate values for the traits, mostly did not show skewness and the distribution were often platykurtic (flatter). The positive skewness in the distribution of yield and its components in the EMS treated populations showed that positive mutations occurred with greater frequency than negative mutations. Brock (1967) observed mutagenic treatments generally increased both skewness and kurtosis by ionizing radiations. The direction of induced micro mutations is of course a function of the genetic make-up of the genotypes subjected to mutagen treatment/ irradiation treatment if Brock's hypothesis (Brock 1967) is correct. These changes in mutants for different characters might be due to the discrepancy expression of a trait induced by mutation. In general, negative skewness was observed for plant height, so to obtain dwarf plants, selection should be done from the lower end of the distribution. Traits number of capsules per plant and seed yield per plant generally observed with positive skewness indicating more proportion of individuals present in lower end of distribution but some plants were also obtained at higher end indicating favorable changes for these traits, also selection should be done at higher end for improvement of these traits. Kar *et al.* (2019) also reported enhanced variability over hybridization only during evaluations of F_1M_1 generation of sesame. The positive changes in mutants compared to respective controls, particularly for number of capsules per plant and seed yield per plant must have come through induced mutagenesis, which indicated the higher effectiveness of mutagenic treatment of hybrids to for enlarging variability over hybridization only. This enhanced variability might be further utilized in the potential breeding programme for yield improvement.

REFERENCES

- Anonymous .2019.** Agricultural Statistics at a Glance. Directorate of Economics and Statistics, Department of Agriculture and Cooperation, New Delhi.
- Begum, T. and Dasgupta, T. 2010.** A comparison of the effects of physical and chemical mutagens in sesame (*Sesamum indicum* L.). *Genet. Mol. Biol.* **33(4)**: 761-766.
- Begum, T. and Dasgupta, T. 2015.** Amelioration of seed yield, oil content and oil quality through induced mutagenesis in sesame (*sesamum indicum*). *Bangladesh J. Bot.* **44(1)**: 15-22.
- Brock, R.D. 1967.** Quantitative variation in *Arabidopsis thaliana* induced by ionizing radiation. *Radiat. Bot.* **10**: 209-233.
- Chakravarti , Singh S.K., Kumar S., Lal, H. J.P. and Vishwakarma, M.K. 2013.** Study of induced polygenic variability in M_1 and chlorophyll mutations in M_2 generations in aromatic rice. *The Bioscan.* **8(1)**: 49-53.
- Gregory, W.C. 1961.** Efficacy of mutation breeding. Mutation and plant Breeding. NAS/NRC. **891**: 461- 486.
- Gupta, S.C.1981.** Fundamentals of Statistics. Himalaya Publishing House, Bouding. p. 418- 464.
- Holme, I.B., Gregersen, P.L. and Pedersen, H.B. 2019.** Induced genetic variation in crop plants by random or targeted mutagenesis: convergence and differences. *Front. Plant Sci.*
- Kar, R.K., Mishra, T.K. and Pradhan, B. 2019.** Studies on frequency distribution, skewness and kurtosis in F_1M_1 mutant populations of sesame. *Int. J. Curr. Microbiol. App. Sci.* **8(4)**: 1755-1760.
- Kumari, V., Chaudhary, H.K., Prasad, R., Kumar, A., Singh, A., Jambhulkar, S. and Sanju, S. 2016.** Frequency and spectrum of mutations induced by gamma radiations and ethyl methane sulphonate in sesame (*Sesamum indicum* L.) **14 (3)**: 270-278.
- Misra, R.C., Sahu, P.K., Jali, C.R., Mishra, H.P. and Misra, L.D. 2008.** Studies on skewness, kurtosis and transgressive variation in M_2 populations of rice bean (*Vigna umbelata*) varieties. *Legume Res.* **31(2)**: 94- 99.
- MOA. 2015.** <http://agricoop.nic.in/annual-report>.
- Monpara, B.A. and Gohil, V.N. 2018.** GJT 5 - Region specific high yielding sesame variety suitable for summer irrigated ecosystem. *Electron. J. Plant Breed.* **9 (1)**: 154-159.
- Singh, S., Sharma R.K. and Chakravarti S.K. 2018.** Gamma ray and ems induced polygenic variability in M_2 and M_3 populations of aromatic rice. *The Bioscan.* **13(3)**: 849-855.
- Sumathi, P. and Muralidharan, V. 2010.** Genetic characteristics of branching and some yield components in F_2 populations of sesame. *Madras Agric. J.* **97(4-6)**: 114-116.



**NATIONAL ENVIRONMENTALISTS
ASSOCIATION**

The National Environmentalists Association is chartered in Ranchi as a nonprofit scientific and educational association of like minded academician, researchers, scientists from all over the nation for the furtherance and diffusion of knowledge of Life Sciences in general and Environmental Science in particular.

The association not only honours its members but also provides FELLOWSHIP to outstanding contributors to the subject and the society.

Contact :

For Editorial Information

Prof. M. P. Sinha
Vice Chancellor
Sido Kanhu Murmu University
Dumka - 814 110
Jharkhand, INDIA

For information regarding Association :

SECRETARY,
National Environmentalists Association,
D-13, Sai Roofs, 1st Floor,
H. H. Colony,
Ranchi - 834002
Jharkhand, India

E-mails : editor.bioscan@gmail.com
dr.mp.sinha@gmail.com
nat.env.assoc@gmail.com

Cell : 94313-60645; 9572649448

Ph. : 0651-2244071

Website : www.thebioscan.com
: www.neaindia.org

NAAS Rating : 5.26

U.S.A. Office

2827 Videre Dr.,
Wilmington,
DE 19808 We, USA

Type setter Bandana Solutions Facility Management LLP
Published by Aditi Publications, Patliputra, Patna

The Bioscan

An International Quarterly Journal of Life Sciences

ISSN : 0973-7049

Volume 15(3) : 2020

Published as an official organ by

NATIONAL ENVIRONMENTALISTS ASSOCIATION

CONTENTS

Page

A. RESEARCH PAPER

1. Comparison and molecular profiling of Begomovirus infecting chilli (*Capsicum annum*) in gangetic alluvial zone of West Bengal
Uday Bikash Oraono, Lourembam Sanajaoba Singh and Jayanta Tarafdar—275 - 280
2. Assessment of probiotic characteristics of *L.plantarum*
Sravani Kandula And Rita Narayanan—281 - 286
3. Effect of rate and frequency of micronutrient on growth attributes and dry matter yield of Banana Cv. grand naine under south Gujarat condition
Narendra Singh, Sonal Tripathi, Patel V. A., Jaimin Naik and Chauhan Aditi—287 - 290
4. Character association and path analysis for seed yield and its components in Grass pea (*Lathyrus sativus* L.)
Gangishetti Ranjithkumar, Sandip Debnath and Duddukur Rajasekhar—291 - 295
5. Determination of physical and biometric properties of onion bulbs in relation to design of digger cum windrower
Shiddanagouda Yadachi and Kiran Nagajjanavar—297 - 301
6. Polygenic variation for morphological and biochemical traits of brinjal genotypes (*Solanum melongena* L.) and its wild relatives
Nisha Sharma, K. D. Bhutia, Rajesh Kumar, Sita Kumari Prasad, Ankita Debnath and Malay Marut Sharma—303 - 309
7. Effect of different sources of horizontal transmission of bacterial flacherie on Et_{50} for symptom expression and mortality of PM X CSR₂
B. L. Kavyashree, R. N. Bhaskar and C. Doreswamy—311 - 314
8. Comparative biology of *Goniozus nephantidis* (Muesbeck) on *Galleria mellonella* L. and *Corcyra cephalonica* (Stainton)
A. V. Desai, M. R. Siddhapara and N. P. Trivedi—315 - 321
9. Efficiency of ovatide on mass seed production of climbing perch (*Anabas testudineus*, Bloch, 1972) in Nalbari district, Assam
Ankur Rajbongshi, A. Ali, M. Chakravarty, M. Deka, H. Mazumdar, Pranab Kr Das and S. Baishya—323 - 326
10. Study of combining ability and gene action for yield and yield component characters in interspecific hybrids of cotton (*Gossypium hirsutum* L. X *Gossypium barbadense* L.)
S. B. Gohil, M. B. Parmar, M. P. Patel and D. A. Patel—327 - 333
11. Per oral inoculation of *Lysinibacillus sphaericus* with pathogenic microbes on rearing and cocoon parameters of silkworm, *Bombyx mori* L.
H. G. Anusha, R. N. Bhaskar and K. V. Anitharani—335 - 338
12. Effect of fungicides, plant extracts and bioagents on spore germination of *Colletotrichum lindemuthianum* causing field bean anthracnose

The Journal is Currently Abstracted / Indexed in

• Paryavarn Abstract, INDIA

• Indian Science Abstract, INDIA

• Cambridge Science Abstract, U.S.A.

• Zoological Record, U.K.

• Directory of Open Access Journal (DOAJ)

• Chemical Abstract, U. S. A.

• Research BIB

• Indian Science

• Journal Seek

• Scientific Indexing Service (SIS)

Journal is currently rated by

Index Copernicus

Universal Impact Factor

NAAS

DISCLAIMER

The Publisher and Editors cannot be held responsible for errors or any consequences arising from the use of information in this journal; the views and opinions expressed do not necessarily reflect those of the Publisher/ Association and Editors, neither does the publication of advertisements constitute any endorsement by the Publisher / Association and Editors of the products advertised.

- S. Narasimha Rao, S.L. Bhattiprolu, A. Vijaya Gopal and V. Sekhar— 339-344
13. Evaluation in vitro different fungicides for growth of *Rhizoctonia bataticola*
A.M. Kadam, S.S. Chavan and A.H. Kendre — 345- 349
14. Evaluation of gladiolus varieties for flowering and cut flower traits under indo-gangetic plains
Girish, P. M., Anjana Sisodia and Anil K. Singh— 351- 355
15. Effect of land configuration and different organic sources on growth, yield and quality of carrot under organic farming
B. Solanki, A. R. Kaswala, P.K. Dubey and A.P. Italiya— 357- 362
16. Verification and usability analysis of medium range weather forecast for the Kokrajhar district of lower Brahmaputra valley zone of Assam
Kuldip Medhi, Kushal Sarmah, Vinod Upadhyay, Sunil Kumar Paul, Athar N. Islam and Bikash J. Gharphalia— 363 - 370
17. Canonical root analysis and clustering for characterization and evaluation of aromatic rice germplasm based on morphological characters
G. Parimala, Ch. Damodhar Raju, L.V. Subba Rao and K. Uma Maheswari— 371 - 374
18. Genetic divergence analysis of sesame genotypes (*Sesamum indicum* L.)
Dasari Rajitha, T. Srikanth, D. Padmaja and T. Kiran Babu— 375 - 379
19. Nutrient uptake and chemical properties of soil after harvest of baby corn (*Zea mays* L.) as influenced by organic manures and fertilizers
D.H. Roopashree, S. Kamal Bai, Nagaraju and S. Raghavendra— 381 - 384
20. Genotypic response on growth and yield in papaya
D. K. Varu., K. D. Patel and Sandip Makhmale— 385 - 389
21. Studies on frequency distribution of yield and yield related traits in F_2M_2 generation of sesame (*Sesamum indicum* L.)
Rajesh Kumar Kar, Tapash Kumar Mishra and Banshidhar Pradhan — 391 - 395
22. Correlation and path analysis in cowpea (*Vigna unguiculata* (L.) Walp)
R.M. Nagalakshmi, R. Usha Kumari and R. Ananda Kumar— 397 - 401
23. A simple and efficient method for DNA extraction from rabi sorghum [*Sorghum bicolor* (L.) Moench]"
S. S. Gadakh, G. D. Khalekar, U. S. Dalvi, A. A. Kale and P.L. Kulwal— 403 - 406
24. Determination of economic injury level (EIL) of sugarcane planthopper borer *Chilo tumidicostalis* Hampson (Lepidoptera: pyralidae)
R. K. Nath and D. K. Saikia— 407- 409
25. Performance of different summer mung (*Vigna radiata* L.) varieties sown at different dates under Manipur valley condition
Meghna Gogoi, Jamkhogin Lhungdim, Kamal Kant, Urjashi Bhattacharya and Gauri Mohan — 411 - 414

ZONAL CO-ORDINATORS OF THE ASSOCIATION

- Prof. N. Behera
School of Life Science,
Sambalpur University
- Dr. Nirmal Kumar
ISTAR, Vallabh Vidyanagar,
Anand, Gujarat
- Dr. P. N. Sudha
D. K. M. College for Women,
Vellore
- Prof. S. P. S. Dutta
Dept. of Environmental Science,
Jammu University, Jammu
- Dr. V. Salom Gnana Thanga
Dept. of Env. Scs.,
University of Kerala, Kariavattom
Tiruvananthapuram, Kerala

Publications of the Association

The Bioscan

An International Quarterly Journal of Life Sciences

The Ecoscan

An International Quarterly Journal of
Environmental Sciences

Both the Journals are
online

Both the Journals are
available on Google.com

Websites of the Journals are
www.theecoscan.in
www.thebioscan.in

FEATURES OF ASSOCIATION

- Association is registered under 80G of I.T.
- Prestigious fellowship of the Association (F. N. E. A.) to academicians of the nation.
- Regular annual conference of national and international levels organized by the Association.
- Young Scientist and Senior Scientist award during the conference of the Association.



_____ 062 & 082

_____ 000 & 000

THE BIOSCAN : SUBSCRIPTION RATES				
		India (Rs.)	SAARC Countries	Other Countries
Individuals	One Year	1,000	2,000(I:C)	US \$200
	Life Member*	10,000		
Institutions	One Year	3,000	6,000(I:C)	US \$400
	Life Member*	30,000		

*Life Member will receive the journal for 15 years while other benefits will continue whole life

THE BIOSCAN : MEMBERSHIP FORM

Please enter my subscription for the above journal for the year / life member.

Name:

Address:

E-mail:

Payment Rs. : by DD / MD in favour of
National Environmentalists Association payable at Ranchi, No. Dated
..... is enclosed.

NOTE: FOR MEMBERSHIP THE ABOVE INFORMATION CAN BE SENT ON SEPARATE SHEET